

# Drying Agents & Water Removal Catalog

	<b>Page(s)</b>
<b>Diamond Dry</b> .....	<b>2-7</b>
<b>Rapid Dry</b> .....	<b>8-10</b>
<b>Trenching with Pro's Choice</b> .....	<b>11-12</b>
<b>Surface</b> .....	<b>13</b>
<b>Playball</b> .....	<b>14</b>
<b>Rain Out</b> .....	<b>15</b>
<b>Super Soppers</b> .....	<b>16-17</b>
<b>Diamond Pumps</b> .....	<b>18</b>
<b>Squeegees</b> .....	<b>18</b>



**YOUR “ONE-STOP” SOURCE FOR AMERICA’S BASEBALL, SOFTBALL & SPORTS SURFACES & SUPPLIES!**

PRICES SUBJECT TO CHANGE & AVAILABILITY PLUS SHIPPING | VOLUME DISCOUNTS AVAILABLE | COOPERATIVE PURCHASING CONTRACT PRICING FOR 50 STATES

**PARTAC PEAT CORPORATION**  
ONE KELSEY PARK, GREAT MEADOWS, NEW JERSEY 07838

800-247-BEAM (2326) • (908) 637-4191 • FAX (908) 637-8421  
www.beamclay.com • sales@beamclay.com  
Bid Term - 5/9/18 - 5/8/20; Extended to 5/8/21; Extended to 5/8/22



**BEAM CLAY®**

Drying Agents—Diamond Dry®

**WHOLESALE PRICE LIST**  
EFFECTIVE: JANUARY 1, 2021



**DIAMOND DRY®**



**GO FROM  
"RAINED OUT"  
TO "PLAY BALL!"  
IN 15 MINUTES**



PA  
ON

**PARTAC PEAT CORPORATION**  
ONE KELSEY PARK, GREAT MEADOWS, NEW JERSEY 07838

800-247-BEAM (2326) • (908) 637-4191 • FAX (908) 637-8421  
www.beamclay.com • sales@partac.com

Bid Term - 5/9/18 - 5/8/20; Extended to 5/8/21; Extended to 5/8/22

ATES

7-8421  
y.com



# BEAM CLAY®

Drying Agents—Diamond Dry®

WHOLESALE PRICE LIST  
EFFECTIVE: JANUARY 1, 2021

## DIAMOND DRY® is 3 to 4 TIMES More Absorbent Than Calcined Clay

...and we have the A.S.T.M. test results to prove it!

- Spreads quickly and easily, drying the field in minutes.
- Safe, natural, bio-degradable cellulose fibers can be applied to soggy grass and muddy areas.
- Less warehouse space, less bags to handle, less labor and less freight.
- Saves money in eliminating the added expenses of rescheduled games.
- Large inventory assures prompt delivery.

Remove excess water.

Open the surface to air.

Apply Diamond Dry.

Spread with back of rake -- 1/8"-1/4" thick. Allow to stand several minutes.

Rake in.

Drag from the driest area to the wettest.

Top dusting the remaining damp spots.

Ready to play -- Actual time from #1 to #8 less than 45 minutes.

**DIAMOND DRY® versus CALCINED CLAY**

"The results of the testing program indicate reasonable consistent results, regardless of test method. The Diamond Dry® exhibits a significant difference in the percent of absorption compared to the other materials. Because of the higher absorption percent, **Diamond Dry® material would appear to be the most effective drying agent.**" Hanson Engineers, Inc., Springfield\*

Sample	Beaker Test % Absorption	Funnel Test % Absorption	Porous Plate Test % Absorption	Comparison Ratios
Diamond Dry	376.3	382.8	370.3	1:3.5
Calcined Clay	114.9	108.8	94.5	
Diamond Dry: Calcined Clay				1:3.3

\*Testing done on Weight Basis. Test adapted from the American Society for Testing and Materials, "Standard Methods of Testing Sorbent Performance of Absorbents," designation F-16-82.

800-247-BEAM (2326) • (908) 637-4191 • FAX (908) 637-8421  
www.beamclay.com • sales@partac.com

**PARTAC PEAT CORPORATION**  
ONE KELSEY PARK, GREAT MEADOWS, NEW JERSEY 07838

**YOUR "ONE-STOP" SOURCE FOR AMERICA'S BASEBALL, SOFTBALL & SPORTS SURFACES & SUPPLIES!**

PRICES SUBJECT TO CHANGE & AVAILABILITY PLUS SHIPPING | VOLUME DISCOUNTS AVAILABLE | COOPERATIVE PURCHASING CONTRACT PRICING FOR 50 STATES

**PARTAC PEAT CORPORATION**  
ONE KELSEY PARK, GREAT MEADOWS, NEW JERSEY 07838

800-247-BEAM (2326) • (908) 637-4191 • FAX (908) 637-8421  
www.beamclay.com • sales@beamclay.com

Bid Term - 5/9/18 - 5/8/20; Extended to 5/8/21; Extended to 5/8/22



# BEAM CLAY®

Drying Agents—Diamond Dry®

WHOLESALE PRICE LIST  
 EFFECTIVE: JANUARY 1, 2021

## DIAMOND DRY vs. CALCINED CLAY

**EFFICIENCY:** To dry a field, a 40lb. bag of Diamond-Dry does the work of four 50 lb. bags of clay. The secret: Diamond-Dry absorbs 500% more water than clay.



**LABOR:** 80% less labor – one man working with Diamond-Dry produces the same result as five men working with clay.



**SPACE:** Diamond-Dry's space requirements are 80% less than clay. No need to store expensive equipment outside.



**FREIGHT:** Smaller quantities mean less freight... 80% less freight.



### TEST PROVEN!

Diamond Dry Absorbs 500% More Water Than Clay.



### DIAMOND-DRY IS THE BEST CHOICE IN THE FIELD, BECAUSE IT:

- Spreads quickly and easily, drying out the field in minutes, without changing soil character.
  - Is safe, natural (cellulose fibers) with no residue build-up.
  - Can be applied to soggy grass and muddy areas.
  - Will not produce combustible fumes.
  - Is less expensive to use. One bag absorbs up to 5 times as much as any other product because of its effectiveness.
  - Less warehouse space, less bags to handle, less labor, less freight.
  - Saves money in eliminating the added expenses of rescheduled games.
  - Large inventory assures prompt delivery.
- NON-TOXIC • NON-CAUSTIC
  - NO CHEMICAL ADDITIVES • BIO-DEGRADABLE
  - 100% SAFE TO SKIN AND EYES
  - CAN BE USED ON GRASS OR DIRT AREAS WITH NO ADVERSE EFFECTS TO SOIL OR GRASS



Diamond Dry is safe and effective for soccer and football fields.

Used extensively in the English Professional Soccer League as well as the National Football League.



**PARTAC PEAT CORPORATION**  
 ONE KELSEY PARK, GREAT MEADOWS, NEW JERSEY 07838

800-247-BEAM (2326) • (908) 637-4191 • FAX (908) 637-8421  
 www.beamclay.com • sales@partac.com

**YOUR "ONE-STOP" SOURCE FOR AMERICA'S BASEBALL, SOFTBALL & SPORTS SURFACES & SUPPLIES!**

PRICES SUBJECT TO CHANGE & AVAILABILITY PLUS SHIPPING | VOLUME DISCOUNTS AVAILABLE | COOPERATIVE PURCHASING CONTRACT PRICING FOR 50 STATES

**PARTAC PEAT CORPORATION**  
 ONE KELSEY PARK, GREAT MEADOWS, NEW JERSEY 07838

800-247-BEAM (2326) • (908) 637-4191 • FAX (908) 637-8421  
 www.beamclay.com • sales@beamclay.com  
 Bid Term - 5/9/18 - 5/8/20; Extended to 5/8/21; Extended to 5/8/22

# BEAM CLAY®

Drying Agents—Diamond Dry®

WHOLESALE PRICE LIST  
EFFECTIVE: JANUARY 1, 2021

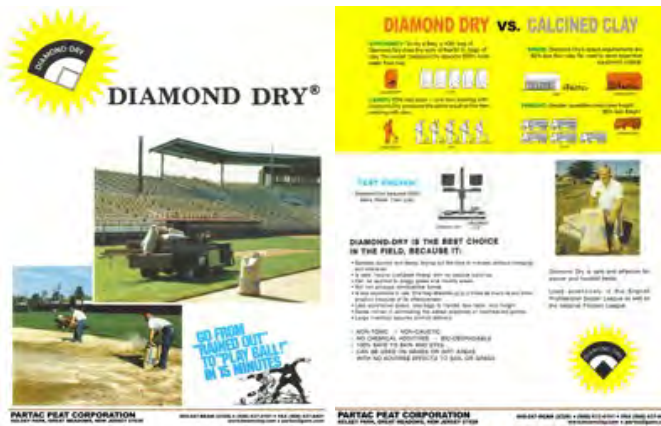
**DIAMOND DRY® - THE ORIGINAL & MOST ABSORBENT INFIELD DRYING AGENT** To Quickly Dry Infields! 4 times more absorbent than Calcined Clay. New granular size and a reddish/beige color. 40 lb. Bags, 50/Pallet

**PER BAG**

F.O.B., NJ	<b>DD-NJ</b>	<b>\$14.25</b>
F.O.B., IA (Full pallets of 50)	<b>DD-IA</b>	<b>\$9.25</b>

**PALLET & COVER CHARGE:** NJ \$6.50/PALLET; IA included in price.

[DIAMOND DRY® INSTALLATION & PRODUCT INFORMATION SHEET](#)



**YOUR "ONE-STOP" SOURCE FOR AMERICA'S BASEBALL, SOFTBALL & SPORTS SURFACES & SUPPLIES!**

PRICES SUBJECT TO CHANGE & AVAILABILITY PLUS SHIPPING | VOLUME DISCOUNTS AVAILABLE | COOPERATIVE PURCHASING CONTRACT PRICING FOR 50 STATES

**PARTAC PEAT CORPORATION**  
ONE KELSEY PARK, GREAT MEADOWS, NEW JERSEY 07838

800-247-BEAM (2326) • (908) 637-4191 • FAX (908) 637-8421  
www.beamclay.com • sales@beamclay.com  
Bid Term - 5/9/18 - 5/8/20; Extended to 5/8/21; Extended to 5/8/22



# BEAM CLAY®

Drying Agents—Diamond Dry®

WHOLESALE PRICE LIST  
 EFFECTIVE: JANUARY 1, 2021



Diamond Dry in action. Photo Top Left: Maintenance worker views rainwater accumulated near second base; Top Right: He spreads a shovel full of Diamond Dry on the puddle; Bottom Left: He then rakes covered area to mix Diamond Dry with water and levels area; Bottom Right: Completed job. 15 minutes later the area will be ready for play.

**YOUR “ONE-STOP” SOURCE FOR AMERICA’S BASEBALL, SOFTBALL & SPORTS SURFACES & SUPPLIES!**

PRICES SUBJECT TO CHANGE & AVAILABILITY PLUS SHIPPING | VOLUME DISCOUNTS AVAILABLE | COOPERATIVE PURCHASING CONTRACT PRICING FOR 50 STATES



**BEAM CLAY®**

Drying Agents—Diamond Dry®

**WHOLESALE PRICE LIST**  
EFFECTIVE: JANUARY 1, 2021

**THE ORIGINAL  
& MOST ABSORBENT  
INFIELD DRYING AGENT  
IS NOW NEW & IMPROVED!**

**WHAT!**  
We Come 100 Miles  
And You Don't Use  
**DIAMOND  
DRY!**

**DIAMOND-DRY.**  
NEW GRANULAR SIZE – LESS DUSTY  
FASTER DRYING – 20% MORE WATER ABSORPTION  
NEW REDDISH/BEIGE COLOR

**YOUR "ONE-STOP" SOURCE FOR AMERICA'S BASEBALL, SOFTBALL & SPORTS SURFACES & SUPPLIES!**

PRICES SUBJECT TO CHANGE & AVAILABILITY PLUS SHIPPING | VOLUME DISCOUNTS AVAILABLE | COOPERATIVE PURCHASING CONTRACT PRICING FOR 50 STATES

**PARTAC PEAT CORPORATION**  
ONE KELSEY PARK, GREAT MEADOWS, NEW JERSEY 07838

800-247-BEAM (2326) • (908) 637-4191 • FAX (908) 637-8421  
www.beamclay.com • sales@beamclay.com  
Bid Term - 5/9/18 - 5/8/20; Extended to 5/8/21; Extended to 5/8/22



**BEAM CLAY®**

Drying Agents—Diamond Dry®

**WHOLESALE PRICE LIST**  
EFFECTIVE: JANUARY 1, 2021



## Rapid Dry® drying agent

### Stay in the game...

With Rapid Dry drying agent. When you need a game saver, you need Rapid Dry in the lineup. It quickly wicks away excess water from your playing field and improves soil consistency. Its perfectly-sized granules improve stability, encourage rapid absorption and reduce compaction with less dust than other quick drying products. Its sand-like texture improves footing on slippery surfaces. Rapid Dry is the only drying agent available in the same deep red color as Pro's Choice infield conditioner. It works quickly so puddles disappear and you're back in the game — fast.

rapidDRY application



Step 1: Pour Rapid Dry liberally over puddles and wet areas.



Step 2: Rake or drag to uniform layer.

**BUILDINGbetterINFIELDS** since1941

Ask about our entire team of sports field products for top performance on your baseball, football and soccer fields.



**YOUR "ONE-STOP" SOURCE FOR AMERICA'S BASEBALL, SOFTBALL & SPORTS SURFACES & SUPPLIES!**

PRICES SUBJECT TO CHANGE & AVAILABILITY PLUS SHIPPING | VOLUME DISCOUNTS AVAILABLE | COOPERATIVE PURCHASING CONTRACT PRICING FOR 50 STATES

**PARTAC PEAT CORPORATION**  
ONE KELSEY PARK, GREAT MEADOWS, NEW JERSEY 07838

800-247-BEAM (2326) • (908) 637-4191 • FAX (908) 637-8421  
www.beamclay.com • sales@beamclay.com  
Bid Term - 5/9/18 - 5/8/20; Extended to 5/8/21; Extended to 5/8/22



**BEAM CLAY®**

Drying Agents—Diamond Dry®

**WHOLESALE PRICE LIST**  
 EFFECTIVE: JANUARY 1, 2021



## Rapid Dry® drying agent

Rapid Dry drying agent is the game-saving fix for wet, muddy ballfields. Because it is specifically manufactured to be a drying agent and not just a powdered by-product, it has the perfect granule size to stabilize muddy areas on the skinned parts of the infield and blend into the turf in your outfield, too. Its easy and economical to use.

### To Apply to Infields:

1. Pour a sufficient amount of Rapid Dry drying agent on top of puddles or soggy area.
2. Spread evenly over the entire wet area with a rake or by hand.
3. Once the water is absorbed, work the material into the soil with a rake. Use a drag mat on large areas.

Repeat steps 1-3, until desired surface condition is achieved.

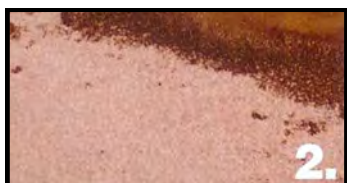
### To Apply to Turf Areas:

4. Fan out with a shovel or Spreader to evenly distribute over wet and soggy turf. Reapply until free water disappears. A push broom can be used to help work Rapid Dry drying agent into the turf thatch.

### Long Term Benefits:

Because it's heat-treated, these durable granules easily mix with, and remain rigid in, the soil to continually absorb excess moisture.

For more information on Pro's Choice sports field products, please feel free to contact us.



**YOUR "ONE-STOP" SOURCE FOR AMERICA'S BASEBALL, SOFTBALL & SPORTS SURFACES & SUPPLIES!**

PRICES SUBJECT TO CHANGE & AVAILABILITY PLUS SHIPPING | VOLUME DISCOUNTS AVAILABLE | COOPERATIVE PURCHASING CONTRACT PRICING FOR 50 STATES



# BEAM CLAY®

## WHOLESALE PRICE LIST EFFECTIVE: APRIL 23, 2021

Pro's Choice® Infield Conditioner | Top-Dressing | Drying Agent

### PRO'S CHOICE CAN BE FOUND ON THE FIELDS OF 28 MAJOR LEAGUE BASEBALL TEAMS!



#### PRO'S CHOICE CALCINED MONTMORILLONITE CLAY

Full pallets only from MS & CA. Full or partial pallets from IN or NJ.

#### PRO'S CHOICE® INFIELD CONDITIONER/TOP-DRESSING/DRYING AGENT

To help control moisture content, firm wet infields, relieve compaction, and improve drainage! 50 lb. bags, 40/Pallet. Full pallets only from MS, CA, any quantity from IN and NJ. Reddish-beige with a redder tint when damp, except Pro Red or Pro Brown are dark red or dark brown.

**BULK PER TON**  
**PRICE**

**PER BAG**  
**PRICE**

**SELECT (Pro Grade, Very Uniform Coarse: 8/16)** (blue bag)  
(1mm-2.5mm) F.O.B., MS (BULK-A41202) (BAG-A45202G40)  
F.O.B., CA (A45202G40-CA)  
F.O.B., NJ (A45202G40-NJ)  
One-Ton Bulk Bags F.O.B., MS (A42402G01)



\$257	\$10.50
—	\$15.50
—	\$15.50
\$312	—

**PRO RED (Pro Grade, Very Uniform, Coarse: 8/16, Long Lasting DARK RED Not Temporarily Dyed Red)** (beige bag)  
(1mm-2.5mm) F.O.B., MS (A45503G40)  
F.O.B., NJ (A45503G40-NJ)



—	\$15.75
—	\$20.75

**PRO BROWN (Pro Grade, Very Uniform, Coarse: 8/16, Long Lasting DARK BROWN Not Temporarily Dyed Brown)** (brown bag)  
(1mm-2.5mm) F.O.B., MS (A45504G40)  
F.O.B., NJ (A45504G40-NJ)



—	\$15.75
—	\$20.75

**CERAMIC (Pro Grade, Very Uniform, Non-Abrasive, Sand Size: 24/48)** (green bag)  
(.3-.7mm) F.O.B., MS (A45221G40)  
F.O.B., NJ (A45221G40-NJ)



—	\$13.50
—	\$18.50

**RED (Regular Coarse Grade: 5/20 Reddish Beige)** (dark red bag)  
(.5mm-4mm) F.O.B., MS (BULK A45201) (BAG A45201G40)  
F.O.B., CA (BAG A45201G40-CA)  
F.O.B., NJ (BAG A45201G40-NJ)  
One-Ton Bulk Bags F.O.B., MS (A45201G01)



\$232	\$9.15
—	\$14.15
—	\$14.15
\$286	—

**TURF (GREY/BEIGE) BLEND (Regular Coarse Grade: 5/20)** (gray bag)  
(.5mm-4mm) F.O.B., MS (BULK A41301) (BAG A45301G40)  
F.O.B., NJ (BAG A45301G40-NJ)  
One-Ton Bulk Bags F.O.B., MS (A1240G01)



\$263	\$8.65
—	\$13.65
\$319	—

**RAPID DRY™ (Fine Drying Agent Grade: 16/80, Non-Abrasive)** (orange bag)  
(.1mm-1mm) (w/o dust) F.O.B., MS (A45216G40)  
F.O.B., CA (A45216G40-CA)  
F.O.B., NJ (A45216G40-NJ)



—	\$9.25
—	\$14.25
—	\$14.25

**PROFESSIONAL (Pro Grade, Very Uniform, Coarser: 5/10)** (red bag)  
(2mm-4mm) F.O.B., MS (A45207G4028)  
F.O.B., NJ (A45207G4028-NJ)



—	\$12.65
—	\$17.65

**PALLET & COVER CHARGE:** NJ \$6.50/pallet (Partial pallets available from IN & NJ); MS & CA pallet included in price.

See our homepage for these helpful links: [Pro's Choice Infield Product Line Informational Brochure](#), [Pro Mound/Home Plate Packing Clay](#), or [Pro Mound Bricks](#).

## YOUR "ONE-STOP" SOURCE FOR AMERICA'S BASEBALL, SOFTBALL & SPORTS SURFACES & SUPPLIES!

PRICES SUBJECT TO CHANGE & AVAILABILITY PLUS SHIPPING | VOLUME DISCOUNTS AVAILABLE | COOPERATIVE PURCHASING CONTRACT PRICING FOR 50 STATES



# BEAM CLAY®

WHOLESALE PRICE LIST  
EFFECTIVE: JANUARY 1, 2021

Trenching



## --Trenching-- Your solution to drainage problems.

-----  
**IMPROVE  
DRAINAGE**  
-----

-----  
**ELIMINATE  
RAINOUTS**  
-----

-----  
**AVOID  
RESCHEDULING**  
-----

-----  
**SAVE TIME  
AND MONEY**  
-----

Traditional solutions to drainage problems often require significant upfront expense and labor to install. Plus, many of them will fail over time as they become clogged or broken through the natural compaction of soil. Pro's Choice® is a lasting solution that requires minimal upfront labor and cost. These products work to reduce compaction and do not break down over time, providing a long-term, economical solution. Professional groundskeepers trust Pro's Choice to manage moisture even in the most adverse weather conditions.

Pro's Choice products have a very high liquid holding capacity due to their superior internal pore volume. When combined with our thermal optimization process that drives moisture out, Pro's Choice is left ready to absorb moisture quickly. Unlike sand or stone, the product's natural capillary action quickly wicks water away and holds it, gradually releasing it over time. This technology can be utilized to prevent or solve difficult drainage challenges.

When installed in one larger or a series of smaller landscape drainage trenches, Pro's Choice will quickly absorb excess water and prevent it from collecting on the surface of your field.

### A WINNING PRODUCT

Professional groundskeepers trust Pro's Choice to deliver top quality, safe playing fields. Pro's Choice can be found on the fields of 21 Major League Baseball teams.



**--Trenching--  
Product Guide**

**Pro's Choice Select**  
**Pro's Choice Turf**  
**Pro's Choice Red**

Meet the challenges of wet, dry or compacted fields. Keep fields smooth, safe and resilient with these premium conditioners. Improve drainage and remove standing water for safer play.

**YOUR "ONE-STOP" SOURCE FOR AMERICA'S BASEBALL, SOFTBALL & SPORTS SURFACES & SUPPLIES!**

PRICES SUBJECT TO CHANGE & AVAILABILITY PLUS SHIPPING | VOLUME DISCOUNTS AVAILABLE | COOPERATIVE PURCHASING CONTRACT PRICING FOR 50 STATES

**PARTAC PEAT CORPORATION**  
ONE KELSEY PARK, GREAT MEADOWS, NEW JERSEY 07838

800-247-BEAM (2326) • (908) 637-4191 • FAX (908) 637-8421  
www.beamclay.com • sales@beamclay.com  
Bid Term - 5/9/18 - 5/8/20; Extended to 5/8/21; Extended to 5/8/22





## How to:

### Install a Drainage Trench using Pro's Choice®

#### Plan Your Trench:

Each 50 lb. bag after compaction = approximately 1.35 cubic feet. Using the example of a 25 foot long x 4" wide trench backfilled with 7 inches of Pro's Choice, use the following calculation to find out how much product is needed:

$$25 \text{ ft (L)} \times .33 \text{ ft (W)} \times .58 \text{ ft (D)} = 4.785 \text{ cubic feet required}$$

In this case you would need 3.5 bags to fill the 25 ft. trench.

While an outlet is ideal, it is usually not necessary, as the length of the trench usually provides enough volume that an outlet is not critical.

#### Build Your Trench:

Follow these three easy steps:

- Step 1: Determine the number of trenches you will need for your area and mark out placement. Every inch of depth in your trench, water will be pulled from 1 foot on either side of the trench. A 6 inch deep trench would require a trench every 12 feet. However, a trench a few inches in from the grass edge of a skinned infield will provide excellent drainage.
- Step 2: Dig or use a walk-behind trencher. The size of your trench can vary. Many of the walk-behinds will cut a trench about 4 inches wide and 8 inches deep.
- Step 3: For best results, make sure that the trench has at least a 1% slop from beginning to end. A 25 foot long trench would have a pitch of at least 3 inches (25 feet x .01 = .25 or 3 inches).
- Step 4: Backfill all but the top 1" inch of your trench(es) with Pro's Choice conditioner. Then add 1 inch of top soil to grade (for turf area) or 2"-3" of infield mix (for skinned area).

#### Long-Term Benefits:

Eliminate saturated soils and continually absorb excess moisture season after season.

**YOUR "ONE-STOP" SOURCE FOR AMERICA'S BASEBALL, SOFTBALL & SPORTS SURFACES & SUPPLIES!**

PRICES SUBJECT TO CHANGE & AVAILABILITY PLUS SHIPPING | VOLUME DISCOUNTS AVAILABLE | COOPERATIVE PURCHASING CONTRACT PRICING FOR 50 STATES



# BEAM CLAY®

**WHOLESALE PRICE LIST**  
EFFECTIVE: JANUARY 1, 2021

**Turf/Profile Calcined Clay Infield Conditioners & Drying Agents, Mound/Home Plate Clays**



## TURFACE® / PROFILE® CALCINED CLAY INFIELD CONDITIONERS & DRYING AGENTS, MOUND/HOMEPLATE CLAYS

**Turf/Profile® Calcined Clay Infield Conditioner/Drying Agents & Mound/Home Plate Clay**

To help control moisture content, firm wet infields, reduce compaction, and improve drainage: 50 lb. Bags - 40 bags/pallet, FULL PALLETS ONLY. F.O.B. BLUE MTN., MS

**Turf/Profile® Infield Conditioner / Drying Agents**

**TURFACE MVP** (Regular Coarse 5/20 Grade) (.8-4mm)

50 lb. Bags - 40 bags/pallet

2000 lb. Bulk Bag

Bulk: 23-25 Ton Loads

**TURFACE PRO LEAGUE** (Very Uniform 8/16 Pro Grade) (1.2-2.4mm)

50 lb. Bags - 40 bags/pallet - *while supplies last*

**TURFACE PRO LEAGUE RED**

50 lb. Bags - 40 bags/pallet - *while supplies last*

**TURFACE PRO LEAGUE HERITAGE RED**

50 lb. Bags - 40 bags/pallet - *while supplies last*

**TURFACE PRO LEAGUE CHAMPION BROWN**

50 lb. Bags - 40 bags/pallet - *while supplies last*

**TURFACE PRO LEAGUE ELITE—NATURAL** (.8-2.4mm)

50 lb. Bags - 40 bags/pallet

2000 lb. Bulk Bag

Bulk: 23-25 Ton Loads

**TURFACE PRO LEAGUE ELITE—RED**

50 lb. Bags - 40 bags/pallet

**TURFACE PRO LEAGUE ELITE—HERITAGE RED**

50 lb. Bags - 40 bags/pallet

**TURFACE PRO LEAGUE ELITE—CHAMPION BROWN**

50 lb. Bags - 40 bags/pallet

**TURFACE QUICK DRY** (Very Fine Drying Agent)

50 lb. Bags - 40 bags/pallet

**TURFACE SLIDEMASTER**

50 lb. Bags - 40 bags/pallet

50 lb. Bags - 40 bags/pallet (Ontario)

**Turf/Profile® Professional Mound / Home Plate Clays**

**RED**—50 lb. Bags - 40 bags/pallet

**RED**—50 lb. Bags - 40 bags/pallet (Ontario)

**5 STAR PACKING CLAY**—50 lb. Bags - 40 bags/pallet

**MAR MOUND™ All Purpose Clay**

50 lb. Bags - 40 bags/pallet

2000 lb. Bulk Bag

**Surface Moundmaster Blocks**

**RED**—8 Blocks/Bag, 304 Blocks/pallet

**RED**—8 Blocks/Bag, 304 Blocks/pallet (Ontario)

**PROFILE Greens Grade**

50 lb. Bags - 40 bags/pallet—**NATURAL** (20/50 .3-.84 mm)

2000 lb. Bulk Bag—**NATURAL**

Bulk: 23-25 Ton Loads—**NATURAL**

50 lb. Bags - 40 bags/pallet—**EMERALD** (20/50 .3-.84 mm)

**PROFILE Field & Fairway Grade**

50 lb. Bags - 40 bags/pallet —**NATURAL** (10/50 .3-2 mm)

2000 lb. Bulk Bag—**NATURAL**

Bulk: 23-25 Ton Loads—**NATURAL**

50 lb. Bags - 40 bags/pallet—**EMERALD** (10/50 .3-2 mm)

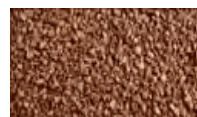
**PROFILE Lawn & Landscape**

50 lb. Bags - 40 bags/pallet—**NATURAL** (5/30 .6-4 mm)

2000 lb. Bulk Bag—**NATURAL**

**PER BAG**

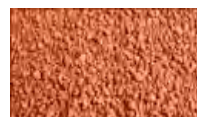
<b>BFMVP5004P</b>	\$8.50
<b>BFMVP2000</b>	\$365
<b>BFMVPBK</b>	\$315
<b>BFPL5027P</b>	\$9.35
<b>BFPL5029R</b>	\$12
<b>BFPL5039</b>	\$12
<b>BFPL5043</b>	\$12
<b>BFEL5048P</b>	\$9.65
<b>BFEL2000</b>	\$390
<b>BFELBK</b>	\$335
<b>BFELR5049</b>	\$12.35
<b>BFELHR5049</b>	\$12.35
<b>BFELCB5049</b>	\$12.35
<b>BFQD5026P</b>	\$8.95
<b>BFTSM5050</b>	\$13
<b>BFTSM5050-ONT</b>	\$10.35



PRO LEAGUE RED



PRO LEAGUE CHAMPION BROWN



RED



NATURAL

**PER BAG**

<b>BFMCR</b>	\$13.50
<b>BFMCR-ONT</b>	\$10.65
<b>SF5STAR-1000</b>	\$9.75

**PER BAG**

<b>MC-1000</b>	\$8.65
<b>MC-5010</b>	\$330

**PER PALLET**

<b>BFMMR</b>	\$545
<b>BFMMR-ONT</b>	\$435

**PER BAG**

<b>BFPG5010P</b>	Call for Price
<b>BFPG2000</b>	Call for Price
<b>BFPGBK</b>	Call for Price
<b>BFPG5030E</b>	Call for Price

**PER BAG**

<b>BFFF5031P</b>	Call for Price
<b>BFFF2000</b>	Call for Price
<b>BFFFBK</b>	Call for Price
<b>BFFF5032E</b>	Call for Price

**PER BAG**

<b>BFLAND5046</b>	Call for Price
<b>BFLAND2000</b>	Call for Price



**YOUR "ONE-STOP" SOURCE FOR AMERICA'S BASEBALL, SOFTBALL & SPORTS SURFACES & SUPPLIES!**

PRICES SUBJECT TO CHANGE & AVAILABILITY PLUS SHIPPING | VOLUME DISCOUNTS AVAILABLE | COOPERATIVE PURCHASING CONTRACT PRICING FOR 50 STATES

# BEAM CLAY®

**WHOLESALE PRICE LIST**  
EFFECTIVE: JANUARY 1, 2021

PLAYBALL Infield Conditioners, Drying Agents, Mound Clay

## PLAYBALL® INFIELD CONDITIONERS/DRYING AGENT

50 lb. Bags - Full Pallets of 40 Only. F.O.B. TN

EACH

### PLAYBALL® INFIELD CONDITIONER 8/20 (.84—2.38mm)

50 lb. Bags - 40 bags/pallet

**EPM-IC-BAG \$6.75/BAG**

2000 lb. Bulk Bag

**EPM-IC-BB \$260/BB**

### PLAYBALL® GAME CHANGER 8/20 — Infield Conditioner with surfactant added

50 lb. Bags - 40 bags/pallet

**EPM-GC-BAG \$8.95/BAG**

2000 lb. Bulk Bag

**EPM-GC-BB \$348/BB**

### FAIR BALL® CONDITIONER 6/20 (.84—3.66mm)

50 lb. Bags - 40 bags/pallet

**EPM-FB-BAG \$6.75/BAG**

2000 lb. Bulk Bag

**EPM-FB-BB \$260/BB**

### PLAYBALL® DRYING AGENT

50 lb. Bags - 40 bags/pallet

**EPM-DA-BAG \$6.75/BAG**

2000 lb. Bulk Bag

**EPM-DA-BB \$260/BB**

### AXIS CERAMIC CALCINED CLAY (bulk not bagged)

50 lb. Bags - 40 bags/pallet

**EPM-CC-BAG \$8.25/BAG**

2000 lb. Bulk Bag

**EPM-CC-BULK \$320/BB**

### PLAYBALL® MOUND CLAY (red/brown, extra-firm)

50 lb. Bags - 40 bags/pallet

**EPM-MC-BAG \$11.75/BAG**



**YOUR “ONE-STOP” SOURCE FOR AMERICA’S BASEBALL, SOFTBALL & SPORTS SURFACES & SUPPLIES!**

PRICES SUBJECT TO CHANGE & AVAILABILITY PLUS SHIPPING | VOLUME DISCOUNTS AVAILABLE | COOPERATIVE PURCHASING CONTRACT PRICING FOR 50 STATES



# BEAM CLAY®

Rain Out Drying Agent

**WHOLESALE PRICE LIST**  
 EFFECTIVE: JANUARY 1, 2021



Rain Out is a field drying agent to remedy muddy fields. In less than five minutes—with only eight ounces of product—you can return an 8'x8' area of mud to playable dirt. Using other drying agents or calcined clay products in the same area, you would have to apply four 50-pound bags. That's 200 pounds of their product.

In full sun or under cloud cover, regardless of wind, the power of the 10-pound bucket gets the job done --10 times faster for half the cost. Rain Out is less expensive, more efficient, reusable, biodegradable, and sustainable.

**Features:**

- Absorbs Over 250 Times its Weight in Rain
- Expands By Less Than 1%
- Non-Toxic & Non-Hazardous
- Improves Turf Growth in Dry Conditions
- Application is Quick & Easy
- Excellent Field Conditioner
- Reduce Watering Cost & Time
- Minimize Staff Needed During Rain Delays
- Meets and Exceeds EPA, OSHA & ANSI Guidelines

RAIN OUT, 10 lb. bucket

#RO-10-BKT

\$285

**Before Rainout is applied**



**After Rainout is applied**



**YOUR “ONE-STOP” SOURCE FOR AMERICA’S BASEBALL, SOFTBALL & SPORTS SURFACES & SUPPLIES!**

PRICES SUBJECT TO CHANGE & AVAILABILITY PLUS SHIPPING | VOLUME DISCOUNTS AVAILABLE | COOPERATIVE PURCHASING CONTRACT PRICING FOR 50 STATES

**PARTAC PEAT CORPORATION**  
 ONE KELSEY PARK, GREAT MEADOWS, NEW JERSEY 07838

800-247-BEAM (2326) • (908) 637-4191 • FAX (908) 637-8421  
 www.beamclay.com • sales@beamclay.com  
 Bid Term - 5/9/18 - 5/8/20; Extended to 5/8/21; Extended to 5/8/22

# BEAM CLAY®

Water Removal Machines—Super Soppers®

**WHOLESALE PRICE LIST**  
 EFFECTIVE: JANUARY 1, 2021

## WATER REMOVAL

### SUPER-SOPPER®/WATER REMOVAL MACHINES

From golf greens to muddy ball diamonds, groundskeepers can rapidly remove large amount of standing water and carry it away with the Super Soppers. Super Soppers can prevent cancelled events and reduce turf damage. Push or pull this ingenious water removal tool over your baseball field, golf course, tennis court, or other turf.

Comprised of simple technology, this non-motorized innovation is surprisingly efficient. The foam pad surrounds a perforated metal drum and absorbs the surface water. A cylindrical roller on top of the drum squeezes the water out of the foam pad, and gravity pulls the water through the perforation into the holding tank. To empty, simply turn the drain elbow down and water flows out. It's easy to transport, even after it begins to fill up. To further extend the life and performance of the Super Sopper, a Filter Cloth is recommended to use on muddy surfaces. The Filter Cloth separates the water from the mud, providing traction for the Supper Sopper and preventing mud from adhering to the foam pad or entering the drum.

**Features:**

- Removes large quantities of water to save the next game or match
- Use on baseball/softball infields and outfields, golf courses, tennis or basketball courts, football or soccer fields and other sports turfs
- Measures 2' wide with a 15" diameter drum
- Foam pad on outside absorbs water, which is squeezed by an adjustable roller into a 7 gallon suspended holding tank
- Drain elbow release to empty
- Includes transport wheels
- Weighs 90 lbs when full, 59 lbs when empty
- Replaceable Foam Pad
- Other replaceable parts available, contact us for more information
- Filter Cloth recommended especially infield puddles which have been sitting for more than a day
- Current lead time is three to four weeks.

**MACKERAL**

7 Gallon Manual (24" Wide x 15" Diameter) **#SS-MAC** **\$675**

7 Gallon Replacement Foam **#SS-MAC-RF** **\$40**

**DOLPHIN**

14 Gallon Manual (24" Wide x 24" Diameter) **#SS-DOL** **\$850**

14 Gallon Replacement Foam **#SS-DOL-RF** **\$45**

**FILTER CLOTH** 14' Wide x 20' (Tyvar® 3251) **#SS-FC** **\$90**



**YOUR "ONE-STOP" SOURCE FOR AMERICA'S BASEBALL, SOFTBALL & SPORTS SURFACES & SUPPLIES!**

PRICES SUBJECT TO CHANGE & AVAILABILITY PLUS SHIPPING | VOLUME DISCOUNTS AVAILABLE | COOPERATIVE PURCHASING CONTRACT PRICING FOR 50 STATES



# BEAM CLAY®

WHOLESALE PRICE LIST  
EFFECTIVE: JANUARY 1, 2021

Water Removal Machines—Super Soppers®

## USING A SUPER SOPPER IN SLOPPY CONDITIONS

SUPER SOPPERS WILL WORK IN THE MOST ADVERSE, SLOPPIEST OF CONDITIONS, SUCH AS THE TWO INCH DEEP MUD SHOWN HERE.

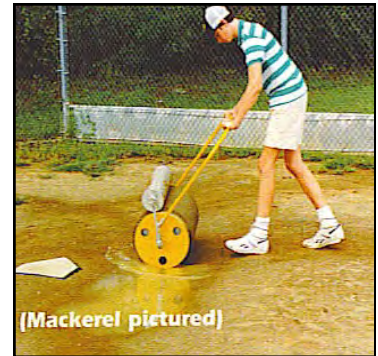


THIS 18' x 12' PUDDLE CONTAINING 20 GALLONS OF WATER WAS REMOVED IN ABOUT 10 MINUTES!

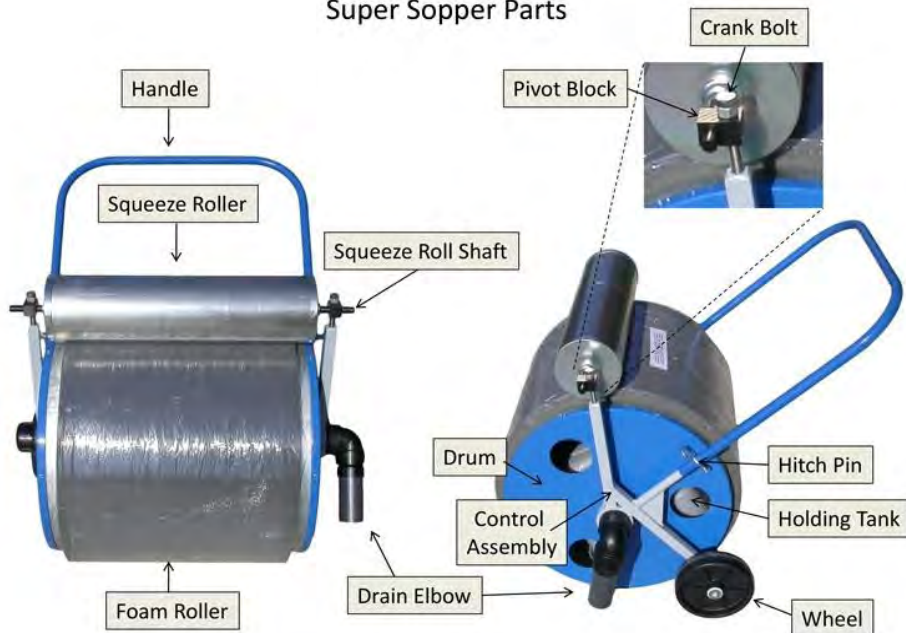
SIMPLY PLACE CLOTH OVER PUDDLE THEN ROLL SUPER SOPPER OVER CLOTH. THE TOUGH POLYPROPYLENE MATERIAL IS LIGHTWEIGHT AND CAN BE USED OVER AND OVER. NOT ONLY IS SURFACE WATER PICKED UP BUT THE WATER IS ACTUALLY SQUEEZED OUT OF THE MUD!



FILTER CLOTH



## Super Sopper Parts



**YOUR "ONE-STOP" SOURCE FOR AMERICA'S BASEBALL, SOFTBALL & SPORTS SURFACES & SUPPLIES!**

PRICES SUBJECT TO CHANGE & AVAILABILITY PLUS SHIPPING | VOLUME DISCOUNTS AVAILABLE | COOPERATIVE PURCHASING CONTRACT PRICING FOR 50 STATES

**PARTAC PEAT CORPORATION**  
ONE KELSEY PARK, GREAT MEADOWS, NEW JERSEY 07838

800-247-BEAM (2326) • (908) 637-4191 • FAX (908) 637-8421  
www.beamclay.com • sales@beamclay.com  
Bid Term - 5/9/18 - 5/8/20; Extended to 5/8/21; Extended to 5/8/22

# BEAM CLAY®

## WHOLESALE PRICE LIST EFFECTIVE: APRIL 23, 2021

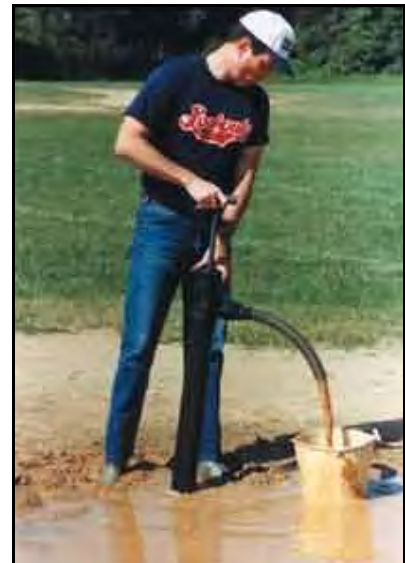
### Water Removal—Diamond Pumps

#### WATER REMOVAL CONTINUED

##### DIAMOND PUMPS (BLACK ABS PLASTIC)

Pump up to 20 GPM without electricity! Great for removing standing water from Baseball Diamonds or Irrigation Line breaks. Easy to use - just place in water and start pumping into a bucket or off the field through Diamond Pump Hose. Diamond Pumps are made to work in mud puddles. Heavy-duty Black ABS Plastic housing with tough PVC handle and piston rod and metal base disc. Base disc prevents mud from entering into the pump. Flexible piston and valve are unaffected by dirt.

3' High Standard Model <b>#DIAPUMP</b>	<b>\$125</b>
25' Hose 1½" I.D. PVC <b>#DIAPUMP25</b>	<b>\$95</b>
50' Hose 1½" I.D. PVC <b>#DIAPUMP50</b>	<b>\$185</b>
75' Hose 1½" I.D. PVC <b>#DIAPUMP75</b>	<b>\$280</b>
100' Hose 1½" I.D. PVC <b>#DIAPUMP100</b>	<b>\$375</b>
Quick Hose Connect <b>#DIAPUMPQHC</b>	<b>\$40</b>
<b>#3033</b> Piston Rod Complete <b>#DIAPUMP3033</b> (A replacement piston rod with handle, cap and attached cup ready to use with pump body.)	<b>\$50</b>
<b>#3043-RC</b> Repair Kit with Cap <b>#DIAPUMP3043-RC</b> (Includes piston cup, cap with seal attached, clamps to re-attach piston cup, & check valve.)	<b>\$35</b>
<b>#3043-R</b> Repair Kit <b>#DIAPUMP3043-R</b> (Includes piston cup, seals, clamps to re-attach piston cup, & check valve.)	<b>\$25</b>



See Infield Grooming Equipment for Yankee® Roller Squeegees

#### MIDWEST™ ROLLER SQUEEGEES

**ROLLER SQUEEGEE** - Called "The best roller squeegees on the market" by our customers, these roller squeegees are built to outlast and outperform other brands. These squeegees are excellent for rolling water off floors, pavement, ballfields, tennis courts and golf greens. The heavy-duty aluminum frame construction and stainless steel axles ensure the roller stays secure. Two roller styles are available: Non-Absorbent—excellent for infields and turf because it pushes the water; and PVA Absorbent—made of superior high-tech polymer designed to soak up incredible amounts of liquid off hard surfaces. Rollers are easily replaceable and interchangeable.

##### Non-Absorbent Roller Squeegee

54" Powder Coated Curved Aluminum Handle With 6" Vinyl Grip.

<b>70924</b> 24" Wide, 6 lbs.	<b>\$136.95</b>
<b>70936</b> 36" Wide, 8 lbs.	<b>\$155.95</b>
<b>70948</b> 48" Wide, 10 lbs.	<b>\$174.95</b>

##### Replacement Rollers

<b>SA10047</b> 24" Non Absorbent, 2 lbs.	<b>\$56.95</b>
<b>SA10048</b> 36" Non Absorbent, 3 lbs.	<b>\$70.95</b>
<b>SA10049</b> 48" Non Absorbent, 4 lbs.	<b>\$84.95</b>

##### PVA Absorbent

60" Powder Coated Aluminum Handle With Curved Aluminum Handle With 6" Vinyl Grip.

<b>72036</b> 36" Wide, 7 lbs.	<b>\$158.95</b>
-------------------------------	-----------------

##### Replacement Rollers

<b>SA10051</b> 36" PVA Absorbent, 3 lbs.	<b>\$75.95</b>
--	----------------



### YOUR "ONE-STOP" SOURCE FOR AMERICA'S BASEBALL, SOFTBALL & SPORTS SURFACES & SUPPLIES!

PRICES SUBJECT TO CHANGE & AVAILABILITY PLUS SHIPPING | VOLUME DISCOUNTS AVAILABLE | COOPERATIVE PURCHASING CONTRACT PRICING FOR 50 STATES



Partac Peat Corporation – Item Price Schedule													
Athletic Equipment & Supplies BID# ESCNJ 17/18-31 Effective 5/9/2018 - 5/8/2022													
Bidding Company Name:				Partac Peat Corporation		Catalog Name:		110 - Water Removal Equipment and Drainage Systems					
No.	Product Category	Beam Clay Catalog Section #	Page#	Product Description	Manufacturer	Vendor SKU	Unit of Measure	Catalog List Price	Bid Discount Percentage	Discount Amt.	Net Effective Bid Price	Comments	No.
1	Baseball & Softball, Football, Soccer, Other	110	5	DIAMOND DRY - 40 lb. Bags, up to 50/Pallet, F.O.B., NJ #DD-NJ	Best Cobb	DD-NJ	40 LB BAG	\$ 14.250	5.0%	\$ 0.713	\$ 13.538	+ shipping - see freight notes	1
2	Baseball & Softball, Football, Soccer, Other	110	5	DIAMOND DRY - 40 lb. Bags, up to 50/Pallet,F.O.B., IA (Full pallets of 50 ONLY) #DD-IA	Best Cobb	DD-IA	40 LB BAG	\$ 9.250	5.0%	\$ 0.463	\$ 8.788	+ shipping - see freight notes	2
3	Baseball & Softball	101	10	Pro's Choice - SELECT - F.O.B., MS - Bulk A41202	Oil Dri	A41202	BULK	\$ 257.00	5.0%	\$ 12.850	\$ 244.150	+ shipping - see freight notes	3
4	Baseball & Softball	101	10	Pro's Choice - SELECT - F.O.B., MS - Bulk Bag A42402G01	Oil Dri	A42402G01	2000 LB. BAG	\$ 312.00	5.0%	\$ 15.600	\$ 296.400	+ shipping - see freight notes	4
5	Baseball & Softball	101	10	Pro's Choice - SELECT - F.O.B., MS - Full Pallets Only - 40 - 50# bags/pallet A45202-G40	Oil Dri	A45202-G40	50 LB BAG	\$ 9.85	5.0%	\$ 0.493	\$ 9.358	+ shipping - see freight notes	5
6	Baseball & Softball	101	10	Pro's Choice - SELECT - F.O.B., CA - Full Pallets Only - 40 - 50# bags/pallet A45202G40-CA	Oil Dri	A45202G40-CA	50 LB BAG	\$ 14.15	5.0%	\$ 0.708	\$ 13.443	+ shipping - see freight notes	6
7	Baseball & Softball	101	10	Pro's Choice - SELECT - F.O.B., NJ - Bag A45202G40-NJ	Oil Dri	A45202G40-NJ	50 LB BAG	\$ 14.25	5.0%	\$ 0.713	\$ 13.538	+ shipping - see freight notes	7
8	Baseball & Softball	101	10	Pro's Choice - PRO RED - F.O.B., MS - Full Pallets Only - 40 - 50# bags/pallet A45503G40	Oil Dri	A45503G40	50 LB BAG	\$ 14.95	5.0%	\$ 0.748	\$ 14.203	+ shipping - see freight notes	8
9	Baseball & Softball	101	10	Pro's Choice - PRO RED - F.O.B., NJ - Bag A45503G40-NJ	Oil Dri	A45503G40-NJ	50 LB BAG	\$ 19.35	5.0%	\$ 0.968	\$ 18.383	+ shipping - see freight notes	9
10	Baseball & Softball	101	10	Pro's Choice - PRO BROWN - F.O.B., MS - Full Pallets Only - 40 - 50# bags/pallet A45503G40	Oil Dri	A45503G40	50 LB BAG	\$ 14.95	5.0%	\$ 0.748	\$ 14.203	+ shipping - see freight notes	10
11	Baseball & Softball	101	10	Pro's Choice - PRO BROWN - F.O.B., NJ - Bag A45503G40-NJ	Oil Dri	A45503G40-NJ	50 LB BAG	\$ 19.35	5.0%	\$ 0.968	\$ 18.383	+ shipping - see freight notes	11
12	Baseball & Softball	101	10	Pro's Choice - CERAMIC - F.O.B., MS - Full Pallets Only - 40 - 50# bags/pallet A45221G40	Oil Dri	A45221G40	50 LB BAG	\$ 12.85	5.0%	\$ 0.643	\$ 12.208	+ shipping - see freight notes	12
13	Baseball & Softball	101	10	Pro's Choice - CERAMIC - F.O.B., NJ - Bag A45221G40-NJ	Oil Dri	A45221G40-NJ	50 LB BAG	\$ 17.25	5.0%	\$ 0.863	\$ 16.388	+ shipping - see freight notes	13
14	Baseball & Softball	101	10	Pro's Choice - RED - F.O.B., MS - Bulk A45201	Oil Dri	A45201	TON	\$ 232.00	5.0%	\$ 11.600	\$ 220.400	+ shipping - see freight notes	14
15	Baseball & Softball	101	10	Pro's Choice - RED - F.O.B., MS - Full Pallets Only - 40 - 50# bags/pallet A45201G40	Oil Dri	A45201G40	50 LB BAG	\$ 8.65	5.0%	\$ 0.433	\$ 8.218	+ shipping - see freight notes	15
16	Baseball & Softball	101	10	Pro's Choice - RED - F.O.B., CA - Full Pallets Only - 40 - 50# bags/pallet A45201G40-CA	Oil Dri	A45201G40-CA	50 LB BAG	\$ 13.35	5.0%	\$ 0.668	\$ 12.683	+ shipping - see freight notes	16
17	Baseball & Softball	101	10	Pro's Choice - RED - F.O.B., NJ - Bag A45201G40-NJ	Oil Dri	A45201G40-NJ	50 LB BAG	\$ 13.05	5.0%	\$ 0.653	\$ 12.398	+ shipping - see freight notes	17
18	Baseball & Softball	101	10	Pro's Choice - RED - F.O.B., MS - Bulk Bag A45201G01	Oil Dri	A45201G01	2000 LB. BAG	\$ 286.00	5.0%	\$ 14.300	\$ 271.700	+ shipping - see freight notes	18
19	Baseball & Softball	101	10	Pro's Choice - TURF (GREY/BEIGE) BLEND - F.O.B., MS - Bulk A41301	Oil Dri	A41301	TON	\$ 263.00	5.0%	\$ 13.150	\$ 249.850	+ shipping - see freight notes	19
20	Baseball & Softball	101	10	Pro's Choice - TURF (GREY/BEIGE) BLEND - F.O.B., MS - Full Pallets Only - 40 - 50# bags/pallet A45301G40	Oil Dri	A45301G40	50 LB BAG	\$ 8.15	5.0%	\$ 0.408	\$ 7.743	+ shipping - see freight notes	20
21	Baseball & Softball	101	10	Pro's Choice - TURF (GREY/BEIGE) BLEND - F.O.B., NJ - Bag A45301G40-NJ	Oil Dri	A45301G40-NJ	50 LB BAG	\$ 12.55	5.0%	\$ 0.628	\$ 11.923	+ shipping - see freight notes	21
22	Baseball & Softball	101	10	Pro's Choice TURF (GREY/BEIGE) BLEND RED - F.O.B., MS - Bulk Bag A1240G01	Oil Dri	A1240G01	2000 LB. BAG	\$ 319.00	5.0%	\$ 15.950	\$ 303.050	+ shipping - see freight notes	22
23	Baseball & Softball	101	10	Pro's Choice - RAPID DRY - F.O.B., MS - Full Pallets Only - 40 - 50# bags/pallet A45216G40	Oil Dri	A45216G40	50 LB BAG	\$ 8.75	5.0%	\$ 0.438	\$ 8.313	+ shipping - see freight notes	23
24	Baseball & Softball	101	10	Pro's Choice - RAPID DRY - F.O.B., CA - Full Pallets Only - 40 - 50# bags/pallet A45216G40-CA	Oil Dri	A45216G40-CA	50 LB BAG	\$ 13.45	5.0%	\$ 0.673	\$ 12.778	+ shipping - see freight notes	24
25	Baseball & Softball	101	10	Pro's Choice - RAPID DRY - F.O.B., NJ - Bag A45216G40-NJ	Oil Dri	A45216G40-NJ	50 LB BAG	\$ 13.15	5.0%	\$ 0.658	\$ 12.493	+ shipping - see freight notes	25
26	Baseball & Softball	101	10	Pro's Choice - PROFESSIONAL - F.O.B., MS - Full Pallets Only - 40 - 50# bags/pallet	Oil Dri	A45207G4028	50 LB BAG	\$ 11.95	5.0%	\$ 0.598	\$ 11.353	+ shipping - see freight notes	26
27	Baseball & Softball	101	10	Pro's Choice - PROFESSIONAL - F.O.B., NJ - Bag A45207G4028-NJ	Oil Dri	A45207G4028-NJ	50 LB BAG	\$ 16.35	5.0%	\$ 0.818	\$ 15.533	+ shipping - see freight notes	27

Bidding Company Name:				Partac Peat Corporation	Catalog Name:			110 - Water Removal Equipment and Drainage Systems					No.
No.	Product Category	Beam Clay Catalog Section #	Page#	Product Description	Manufacturer	Vendor SKU	Unit of Measure	Catalog List Price	Bid Discount Percentage	Discount Amt.	Net Effective Bid Price	Comments	No.
28	Baseball & Softball	101	10	Pro's Choice - PROFESSIONAL - F.O.B., NJ - Bag A45207G4028	Oil Dri	A45207G4028	50 LB BAG	\$ 11.95	5.0%	\$ 0.598	\$ 11.353	+ shipping - see freight notes	28
29	Baseball & Softball	101	13	TURFACE® MVP, Regular Coarse 5/20 Grade) (8-4mm) - Full Pallets Only - 40 - 50# bags/pallet - F.O.B. MS	PROFILE	BFMVP5004P	50 LB BAG	\$ 8.50	5.0%	\$ 0.425	\$ 8.075	+ shipping - see freight notes	29
30	Baseball & Softball	101	13	TURFACE® MVP, Regular Coarse 5/20 Grade) (8-4mm) - 2,000 lb. Bulk Bag - F.O.B. MS BFMVP2000	PROFILE	BFMVP2000	2,000 LB BAG	\$ 365.00	5.0%	\$ 18.250	\$ 346.750	+ shipping - see freight notes	30
31	Baseball & Softball	101	13	TURFACE® MVP, Regular Coarse 5/20 Grade) (8-4mm) - Bulk: 22-23 Ton Loads - F.O.B. MS BFMVPBK	PROFILE	BFMVPBK	TON	\$ 315.00	5.0%	\$ 15.750	\$ 299.250	+ shipping - see freight notes	31
32	Baseball & Softball	101	13	TURFACE® PRO LEAGUE - Very Uniform 8/16 Pro Grade (1.2-2.4mm) - Full Pallets Only - 40 - 50# bags/pallet - F.O.B. MS BFPL5027P	PROFILE	BFPL5027P	50 LB BAG	\$ 9.35	5.0%	\$ 0.468	\$ 8.883	+ shipping - see freight notes	32
33	Baseball & Softball	101	13	TURFACE® PRO LEAGUE RED - Full Pallets Only - 40 - 50# bags/pallet - F.O.B. MS BFPL5029R	PROFILE	BFPL5029R	50 LB BAG	\$ 12.00	5.0%	\$ 0.600	\$ 11.400	+ shipping - see freight notes	33
34	Baseball & Softball	101	13	TURFACE® PRO LEAGUE HERITAGE RED - Full Pallets Only - 40 - 50# bags/pallet - F.O.B. MS BFPL5039	PROFILE	BFPL5039	50 LB BAG	\$ 12.00	5.0%	\$ 0.600	\$ 11.400	+ shipping - see freight notes	34
35	Baseball & Softball	101	13	TURFACE® PRO LEAGUE CHAMPION BROWN - Full Pallets Only - 40 - 50# bags/pallet - F.O.B. MS BFPL5043	PROFILE	BFPL5043	50 LB BAG	\$ 12.00	5.0%	\$ 0.600	\$ 11.400	+ shipping - see freight notes	35
36	Baseball & Softball	101	13	TURFACE® PRO LEAGUE ELITE - NATURAL - Full Pallets Only - 40 - 50# bags/pallet - F.O.B. MS BFEL5048P	PROFILE	BFEL5048P	50 LB BAG	\$ 9.65	5.0%	\$ 0.483	\$ 9.168	+ shipping - see freight notes	36
37	Baseball & Softball	101	13	TURFACE® PRO LEAGUE ELITE - NATURAL - 2,000 LB. BULK BAG - F.O.B. MS BFEL2000	PROFILE	BFEL2000	2,000 LB. BAG	\$ 390.00	5.0%	\$ 19.500	\$ 370.500	+ shipping - see freight notes	37
38	Baseball & Softball	101	13	TURFACE® PRO LEAGUE ELITE - NATURAL - BULK: 23-25 TON LOADS - F.O.B. MS BFELBK	PROFILE	BFELBK	TON	\$ 335.00	335.0%	\$ 16.750	\$ 318.250	+ shipping - see freight notes	38
39	Baseball & Softball	101	13	TURFACE® PRO LEAGUE ELITE - RED - Full Pallets Only - 40 - 50# bags/pallet - F.O.B. MS BFELR5049	PROFILE	BFELR5049	50 LB BAG	\$ 12.35	5.0%	\$ 0.618	\$ 11.733	+ shipping - see freight notes	39
40	Baseball & Softball	101	13	TURFACE® PRO LEAGUE ELITE -HERITAGE RED - Full Pallets Only - 40 - 50# bags/pallet - F.O.B. MS BFELHR5049	PROFILE	BFELHR5049	50 LB BAG	\$ 12.35	5.0%	\$ 0.618	\$ 11.733	+ shipping - see freight notes	40
41	Baseball & Softball	101	13	TURFACE® PRO LEAGUE ELITE -CHAMPION BROWN - Full Pallets Only - 40 - 50# bags/pallet - F.O.B. MS BFELCB5049	PROFILE	BFELCB5049	50 LB BAG	\$ 12.35	5.0%	\$ 0.618	\$ 11.733	+ shipping - see freight notes	41
42	Baseball & Softball	101	13	TURFACE® QUICK DRY -Full Pallets Only 40 - 50# bags/pallet - F.O.B. MS BFQD5026P	PROFILE	BFQD5026P	50 LB BAG	\$ 8.95	5.0%	\$ 0.448	\$ 8.503	+ shipping - see freight notes	42
43	Baseball & Softball	101	13	TURFACE® SLIDEMASTER -Full Pallets Only 40 - 50# bags/pallet - F.O.B. MS BFTSM5050	PROFILE	BFTSM5050	50 LB BAG	\$ 13.00	5.0%	\$ 0.650	\$ 12.350	+ shipping - see freight notes	43
44	Baseball & Softball	101	13	TURFACE® SLIDEMASTER -Full Pallets Only 40 - 50# bags/pallet - F.O.B. Ontario BFTSM5050-ONT	PROFILE	BFTSM5050-ONT	50 LB BAG	\$ 10.35	5.0%	\$ 0.518	\$ 9.833	+ shipping - see freight notes	44
45	Baseball & Softball	101	13	TURFACE® Professional Mound/Home Plate Clays - Red - Full Pallets Only 40 - 50# bags/pallet - F.O.B. MS BFMCR	PROFILE	BFMCR	50 LB BAG	\$ 13.50	5.0%	\$ 0.675	\$ 12.825	+ shipping - see freight notes	45
46	Baseball & Softball	101	13	TURFACE® Professional Mound/Home Plate Clays - Red - Full Pallets Only 40 - 50# bags/pallet - F.O.B. Ontario BFMCR-Ontario	PROFILE	BFMCR-Ontario	50 LB BAG	\$ 10.65	5.0%	\$ 0.533	\$ 10.118	+ shipping - see freight notes	46
47	Baseball & Softball	101	13	TURFACE® Professional Mound/Home Plate Clays -5 STAR PACKING CLAY - Full Pallets Only 40 - 50# bags/pallet - F.O.B. MS SF5STAR-1000	PROFILE	SF5STAR-1000	50 LB BAG	\$ 9.75	5.0%	\$ 0.488	\$ 9.263	+ shipping - see freight notes	47
48	Baseball & Softball	101	13	MAR MOUND All Purpose Clay - Full Pallets Only 40 - 50# bags/pallet - F.O.B. MS MC-1000	PROFILE	MC-1000	50 LB BAG	\$ 8.65	5.0%	\$ 0.433	\$ 8.218	+ shipping - see freight notes	48
49	Baseball & Softball	101	13	MAR MOUND All Purpose Clay - 2,000 LB. BULK BAG - F.O.B. MS MC-5010	PROFILE	MC-5010	2,000 LB. BAG	\$ 330.00	5.0%	\$ 16.500	\$ 313.500	+ shipping - see freight notes	49
50	Baseball & Softball	101	13	TURFACE® Moundmaster Blocks - Red - 8 Blocks/Bag, 304 Blocks/pallet - Full Pallets Only - F.O.B. MS BFMMR	PROFILE	BFMMR	PALLET	\$ 545.00	5.0%	\$ 27.250	\$ 517.750	+ shipping - see freight notes	50
51	Baseball & Softball	101	13	TURFACE® Moundmaster Blocks - Red - 8 Blocks/Bag, 304 Blocks/pallet - Full Pallets Only - F.O.B. Ontario BFMMR-ONT	PROFILE	BFMMR-ONT	PALLET	\$ 435.00		\$ 21.750	\$ 413.250	+ shipping - see freight notes	51
52	Baseball & Softball	101	14	PLAYBALL® INFIELD CONDITIONERS/DRYING AGENT 8/30 - 50 lb. Bags - Full Pallets of 40 only F.O.B. TN EMP-IC-BAG	EPM	EMP-IC-BAG	50 LB BAG	\$ 6.75	5.0%	\$ 0.338	\$ 6.413	+ shipping - see freight notes	52
53	Baseball & Softball	101	14	PLAYBALL® INFIELD CONDITIONERS/DRYING AGENT 8/30 - 2,000 lb. Bulk Bag, F.O.B. TN EPM-IC-BB	EPM	EPM-IC-BB	2,000 LB. BAG	\$ 260.00	5.0%	\$ 13.000	\$ 247.000	+ shipping - see freight notes	53
54	Baseball & Softball	101	14	PLAYBALL® GAME CHANGER 8/30 - Infield Conditioner with surfactant added - 50 lb. Bags - Full Pallets of 40 only F.O.B. TN EPM-GC-BAG	EPM	EPM-GC-BAG	50 LB BAG	\$ 8.95	5.0%	\$ 0.448	\$ 8.503	+ shipping - see freight notes	54
55	Baseball & Softball	101	14	PLAYBALL® GAME CHANGER 8/30 - Infield Conditioner with surfactant added - 2,000 lb. Bulk Bag, F.O.B. TN EPM-GC-BB	EPM	EPM-GC-BB	2,000 LB. BAG	\$ 348.00	5.0%	\$ 17.400	\$ 330.600	+ shipping - see freight notes	55



Bidding Company Name:				Partac Peat Corporation		Catalog Name:		110 - Water Removal Equipment and Drainage Systems					No.
No.	Product Category	Beam Clay Catalog Section #	Page#	Product Description	Manufacturer	Vendor SKU	Unit of Measure	Catalog List Price	Bid Discount Percentage	Discount Amt.	Net Effective Bid Price	Comments	No.
56	Baseball & Softball	101	14	FAIR BALL® CONDITIONER - 50 lb. Bags - Full Pallets of 40 only F.O.B. TN EPM-FB-BAG	EPM	EPM-FB-BAG	50 LB BAG	\$ 6.75	5.0%	\$ 0.338	\$ 6.413	+ shipping - see freight notes	56
57	Baseball & Softball	101	14	FAIR BALL® CONDITIONER -2,000 LB. BULK BAG - F.O.B. TN EPM-FB-BB	EPM	EPM-FB-BB	2,000 LB. BAG	\$ 260.00	5.0%	\$ 13.000	\$ 247.000	+ shipping - see freight notes	57
58	Baseball & Softball	101	14	PLAYBALL® DRYING AGENT - 50 lb. Bags - Full Pallets of 40 only F.O.B. TN EPM-DA-BAG	EPM	EPM-DA-BAG	50 LB BAG	\$ 6.75	5.0%	\$ 0.338	\$ 6.413	+ shipping - see freight notes	58
59	Baseball & Softball	101	14	PLAYBALL® DRYING AGENT - 2,000 lb. Bulk Bag, F.O.B. TN EPM-DA-BB	EPM	EPM-DA-BB	2,000 LB. BAG	\$ 260.00	5.0%	\$ 13.000	\$ 247.000	+ shipping - see freight notes	59
60	Baseball & Softball	101	14	AXIS CERAMIC CALCINED CLAY (bulk not bagged) - 50 lb. Bags - Full Pallets of 40 only F.O.B. TN EPM-CC-BAG	EPM	EPM-CC-BAG	50 LB BAG	\$ 8.25	5.0%	\$ 0.413	\$ 7.838	+ shipping - see freight notes	60
61	Baseball & Softball	101	14	AXIS CERAMIC CALCINED CLAY (bulk not bagged) - 2,000 lb. Bulk Bag, F.O.B. TN EPM-CC-BULK	EPM	EPM-CC-BULK	2,000 LB BAG	\$ 320.00	5.0%	\$ 16.000	\$ 304.000	+ shipping - see freight notes	61
62	Baseball & Softball	101	14	PLAYBALL® MOUND CLAY (RED/BROWN, EXTRA-FIRM), 50 lb. Bags - Full Pallets of 40 only F.O.B. TN EPM-MC-BAG	EPM	EPM-MC-BAG	50 LB BAG	\$ 11.75	5.0%	\$ 0.588	\$ 11.163	+ shipping - see freight notes	62
63	Baseball & Softball, Football, Soccer, Other	110	VARIOUS	FULL OR PARTIAL PALLETS: PALLET & COVER CHARGES FROM NJ	Partac Peat Corporation	NJ-Pallet	EACH	\$ 6.500	5.0%	\$ 0.325	\$ 6.175	+ shipping - see freight notes	63
64	Baseball & Softball, Football, Soccer, Other	110	16	SUPER-SOPPER/WATER REMOVAL MACHINE - MACKERAL - 7 Gallon Manual (24" Wide x 15" Diameter) #SS-MAC	Kuranda	SS-MAC	EACH	\$ 675.000	5.0%	\$ 33.750	\$ 641.250	+ shipping - see freight notes	64
65	Baseball & Softball, Football, Soccer, Other	110	16	SUPER-SOPPER/WATER REMOVAL MACHINE - MACKERAL - 7 Gallon Replacement Foam #SS-MAC-RF	Kuranda	SS-MAC-RF	EACH	\$ 40.000	5.0%	\$ 2.000	\$ 38.000	+ shipping - see freight notes	65
66	Baseball & Softball, Football, Soccer, Other	110	16	SUPER-SOPPER/WATER REMOVAL MACHINE - DOLPHIN - 14 Gallon Manual (24" Wide x 24" Diameter) #SS-DOL	Kuranda	SS-DOL	EACH	\$ 850.000	5.0%	\$ 42.500	\$ 807.500	+ shipping - see freight notes	66
67	Baseball & Softball, Football, Soccer, Other	110	16	SUPER-SOPPER/WATER REMOVAL MACHINE - DOLPHIN - 14 Gallon Replacement Foam #SS-DOL-RF	Kuranda	SS-DOL-RF	EACH	\$ 45.000	5.0%	\$ 2.250	\$ 42.750	+ shipping - see freight notes	67
68	Baseball & Softball, Football, Soccer, Other	110	16	SUPER-SOPPER/WATER REMOVAL MACHINE - FILTER CLOTH 14" Wide x 20' (Tyvar 3251) #SS-FC	Kuranda	SS-FC	EACH	\$ 90.000	5.0%	\$ 4.500	\$ 85.500	+ shipping - see freight notes	68
69	Baseball & Softball, Football, Soccer, Other	110	18	DIAMOND PUMP - 3' High Standard Model #DIAPUMP	Kuranda	DIAPUMP	EACH	\$ 125.000	5.0%	\$ 6.250	\$ 118.750	+ shipping - see freight notes	69
70	Baseball & Softball, Football, Soccer, Other	110	18	DIAMOND PUMP - 25' Hose 1½" I.D. PVC #DIAPUMP25	Kuranda	DIAPUMP25	EACH	\$ 95.000	5.0%	\$ 4.750	\$ 90.250	+ shipping - see freight notes	70
71	Baseball & Softball, Football, Soccer, Other	110	18	DIAMOND PUMP - 50' Hose 1½" I.D. PVC #DIAPUMP50	Kuranda	DIAPUMP50	EACH	\$ 185.000	5.0%	\$ 9.250	\$ 175.750	+ shipping - see freight notes	71
72	Baseball & Softball, Football, Soccer, Other	110	18	DIAMOND PUMP - 75' Hose 1½" I.D. PVC #DIAPUMP75	Kuranda	DIAPUMP75	EACH	\$ 280.000	5.0%	\$ 14.000	\$ 266.000	+ shipping - see freight notes	72
73	Baseball & Softball, Football, Soccer, Other	110	18	DIAMOND PUMP - 100' Hose 1½" I.D. PVC #DIAPUMP100	Kuranda	DIAPUMP100	EACH	\$ 375.000	5.0%	\$ 18.750	\$ 356.250	+ shipping - see freight notes	73
74	Baseball & Softball, Football, Soccer, Other	110	18	DIAMOND PUMP - Quick Hose Connect #DIAPUMPQHC	Kuranda	DIAPUMPQHC	EACH	\$ 40.000	5.0%	\$ 2.000	\$ 38.000	+ shipping - see freight notes	74
75	Baseball & Softball, Football, Soccer, Other	110	18	DIAMOND PUMP - #3033 Piston Rod Complete #DIAPUMP3033	Kuranda	DIAPUMP3033	EACH	\$ 50.000	5.0%	\$ 2.500	\$ 47.500	+ shipping - see freight notes	75